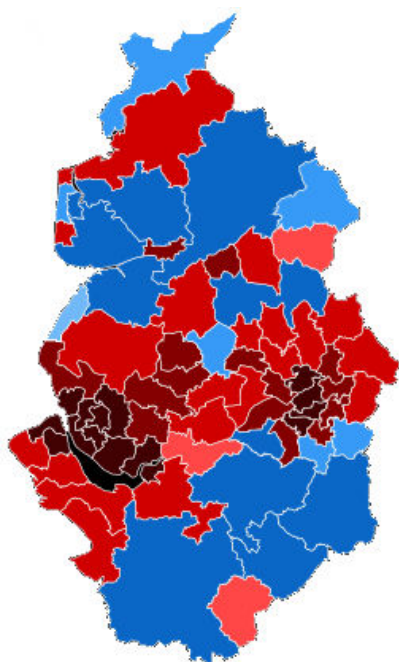


Autumn Newsletter

September 2020

As we have been writing this newsletter, all schools and colleges have been moving to full reopening and preparing to reduce the risk of the Covid-19 pandemic for school communities. We wish colleagues in all education sectors and organisations all the very best for the coming school year, when no doubt there will be further unexpected and challenging events.



Serving schools across the North West region

New additions for 2020-21

- Foundation Subjects: Art, History, Geography, Science and Computing CPD
- Half-termly Headteacher meetings (previously termly)
- Mental Health and Well Being Programme (updated)

North West Learning Partnership (NWLP) serves schools across the North West

As a result of the excellent work that NWLP does and the national recognition we have gained, the NWLP has grown in strength.

The partnership now includes 51 settings in total, one lead school- 11 Strategic partners and 40 members from all phases working together. Localities include: St Helens, Wigan/Bolton/Manchester, Knowsley/Liverpool and Halton. In comparison to 2019-20 when there were 39 settings in total.

Being part of the NWLP - what are the benefits? (see NWLP CPD brochure for more information)

- Free Head teacher and senior leadership briefings including an annual conference. These are at least ½ termly based on current national and local agendas
- NQT package – One free place, all School Direct trainees that have trained via the NWLP route will receive a free place
- Termly Mathematics and English subject leader network meetings - Free of charge. Attendance at termly Science subject leader network - Free of charge. Termly Computing Subject Leader Network, School Business Manager and Mental Health and Well Being Networks - All Free of Charge
- EYFS Leadership network - These are termly meetings at a reduced rate
- 20% off School to School support packages
- 25% off all CPD opportunities- Maths/English/Science/Foundation subjects for ALL teachers/leaders and Support staff
- Free ½ day consultation to formulate a bespoke package of training for your school or a cluster of schools
- An opportunity to engage in Research and Development activities of the partnership linked to National priorities i.e Maths Hub Work and Closing the Gap projects
- To be kept abreast of all current initiatives and educational updates via the NWLP and Maths Hub mailing lists and access to all areas via the North West Learning Partnership website
- School Direct Student attached to your school* - Primary salaried and non-salaried routes including Primary with Maths. Secondary Maths and MFL are now available *if appropriate.

For information on how to join please contact:

Lisa Bradshaw - lisa.bradshaw@three-saints.org.uk or

Sarah Makin - sarah.makin@three-saints.org.uk



School Direct

Becoming a Teacher with North West Learning Partnership

To date, **North West Learning Partnership (previously St Mary and St Thomas CE Primary Alliance)** will have trained 87 Primary trainees resulting in high employment rate with a 60% early deployment rate over the past few years. The success of the programme is largely due to the Strategic Partner Head Teachers and talented staff within their schools that give up a vast amount of their time to deliver training and mentor trainees. We have extremely talented SLEs that also support the programme.

In 2019-20, we had 14 trainees that successfully completed the programme despite the challenging, extra ordinary circumstances they found themselves in due to COVID. They have all just started their NQT year- we wish them all the very best and we look forward to continuing to work with them as they access the North West Learning Partnership NQT Programme.

In 2020-21 we welcome 34 Primary and 2 Secondary trainees to our programmes.

Why choose the North West Learning Partnership to train to teach?

We are the **lead school for North West Learning Partnership and North West Maths Hub 3**.

We offer a range of different Teacher training programmes (see below for further details). The outstanding lead partnership school - St Mary and St Thomas CE Primary School (part of the 3 Saints Academy Trust) supported by our Strategic Partner schools deliver our high-quality provision. The programmes have been quality assured by several external agencies as a result the alliance provision continues to be graded as 'Outstanding'.

The North West Learning Partnership continues to be above the National norm for School Direct provision and is classed as a high-flying alliance in terms of numbers of applications and successful recruitment and retention.

School Direct is a one-year teacher training programme for graduates. Schools work in collaboration with **Liverpool John Moores University** also an 'Outstanding provider', to provide high quality training. Training with the North West Learning Partnership means you become a staff member from day one whilst receiving academic and University support. Student feedback is key to ensuring quality and is paramount to ensuring the quality of our programme.

Training is provided by Serving Head Teachers, Senior Leaders, SLEs/ PDLs and other specialists in their field based at our Strategic Partner schools. We are committed to ongoing development of all trainees for at least 3 years.

Trainees have access, free of charge, to our highly effective NQT and RQT programmes on completion of the School Direct year.

Primary General Non-Salaried Route

The Primary programme will focus predominantly on developing your subject knowledge and subject pedagogy in all primary curriculum subjects, so that you have the knowledge, understanding and skills needed to become a confident teacher of the 5-11 age range. In addition, training sessions will develop your confidence in a range of relevant issues; classroom and behaviour management; meeting individual needs and inclusion; planning and assessment etc. There is a strong emphasis on social justice issues in education and on mental health and well-being. We want you to develop into an inclusive and reflective teacher, with the skills, energy and resilience needed to make a real difference in schools.

Apply for this training programme through UCAS: <http://www.ucas.com> Training Provider 13N | Course code DF23

Primary General Salaried Route

This salaried School Direct programme is suitable for experienced, non-teaching staff and career changers. Applicants are recommended to have the support of a school. The trainee is employed by a school as a non-qualified teacher for one academic year. The school can also potentially, benefit financially from "growing their own". The trainee teacher receives a personal training programme, accessing our outstanding training at the North West Learning Partnership and gains a PGCE with Masters credits and QTS at Liverpool John Moores University. The training takes place half a day a week whilst the trainee can teach in school for up to 80% of the timetable. Salaried trainees normally complete a postgraduate certificate in education (PGCE) with QTS. This qualification includes 60 credits at Masters level.

Apply for this training programme through UCAS: <http://www.ucas.com> Training Provider 13N | Course code 3BFS

Primary General with Mathematics Specialism

As **lead provider for North West Maths Hub 3**, we are excited to offer this Primary General with Mathematics Specialism in partnership with Liverpool John Moores University. Trainees will engage with our successful and unique Primary General Teacher Training programme with additional training units in mathematics delivered by our Teaching for Mastery specialists, maths PDLs and

SLEs in addition to external experts. Trainees will receive a PGCE with Masters credits and QTS. Trainees will be placed in a Teaching for Mastery lead school where possible.

Apply for this training programme through UCAS: <http://www.ucas.com> Training Provider 13N | Course code SDKJ

Secondary Mathematics

Due to the affiliation with **North West 3 Maths Hub**, we are excited to offer a School Direct Secondary Mathematics in school one year teacher training programme. You will be awarded PGCE with Masters credits and QTS. The course is offered by the lead schools Rainford High and Up Holland High in association with the North West Learning Partnership and Liverpool John Moores University.

This unique training programme offers exciting opportunities to be involved in:

Training with high quality relevant professionals with an outstanding track record for delivering the highest grades for young people at Key Stage 4 and Key Stage 5.

Opportunity for leadership training and development of strategic curriculum design.

Commitment to develop examination expertise at KS4 and KS5.

Teaching opportunity across KS2,3, 4 and 5.

Subject specific and career impacting professional development.

High quality subject specific CPD opportunities with nationally recognised speakers.

High quality guest speakers to support pedagogical and subject specialism.

The discussion club focused on high quality academic research linked to educational discussion at some of the leading local restaurants and venues throughout the year.

Apply for this training programme through UCAS: <http://www.ucas.com> Training Provider 13N | Course code JL80

Secondary MFL

Due to the expertise of trainers and staff in our Lead Secondary schools, we are excited to offer our PGCE with Masters credits and QTS in MFL. The course is offered by the lead schools Rainford High and Up Holland High in association with the North West Learning Partnership and Liverpool John Moores University. Due to the outstanding teaching in our schools, results in MFL are significantly above national average and both schools offer unique and dynamic training and teaching opportunities for the right aspirational initial teacher training candidates.

This unique training programme offers exciting opportunities to be involved in:

Training with high quality relevant professionals with an outstanding track record for delivering the highest grades for young people at Key Stage 4 and Key Stage 5 as well as delivering exceptional transition for young people.

Opportunity for leadership training and development of strategic curriculum design.

Commitment to develop examination expertise at KS4 and KS5.

The opportunity to take part in cultural language exchange visits and programmes.

Teaching opportunity across KS2,3, 4 and 5.

Subject specific and career impacting professional development. Such as high-quality subject specific CPD.

Opportunities with nationally recognised guest speakers to support pedagogical and subject specialism.

The discussion club focused on high quality academic research linked to educational discussion at some of the leading local restaurants and venues throughout the year.

Apply for this training programme through UCAS: <http://www.ucas.com> Training Provider 13N | Course code SD90

Key personnel to contact to find out more:

Kathy Carman - North West Learning Partnership School Direct Strategic Lead

kathy.carman@three-saints.org.uk | <https://www.facebook.com/nwlp schooldirect/> | 07383094506

Sarah Knowles - North West Learning Partnership Administrator

sarah.knowles@three-saints.org.uk | 07452814474

For further details of all programmes:

<http://www.northwestlearningpartnership.co.uk/index.php/workstreams/school-direct>



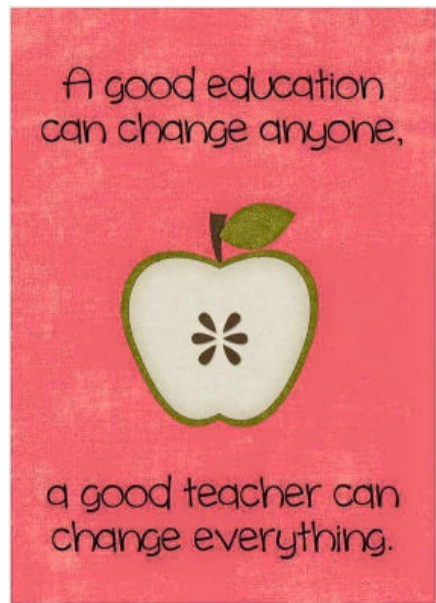
@nwlp_sd

NQT Training with North West Learning Partnership

committed to ongoing excellence!

We offer a full Primary Programme with EYFS sessions built in. SLEs, school leaders and experts in their field deliver this highly effective programme. The Primary programme has continued to be a high quality programme with 35 teachers attending in 2019-20 (both face to face and online).

The full Primary programme for 2020-21 is here:
<http://bit.ly/2P17uFO>



Primary NQT/RQT Conference

Making the most of your 1st Year!

Wednesday 7th October 2020

Mercure St Helens Hotel, Linkway West, St Helens, WA10 1NG

8.45am: Arrival and Coffee

8.55am: Welcome and introductions- Lisa Bradshaw, Director of NWLP

9.00-10.45am: Mathematics- Raising the bar! – Tara Loughran, mathematics consultant

10.45-11.00am: Break

11.00-12.30pm: English- Raised Expectations – Maddy Barnes, English Director

12.30-13.15pm: Lunch and networking

13.15-15.00pm: Behaviour Management Strategies – Jason Bangbala, Behavioural expert

15.00-15.10pm: Comfort break

15.10-15.30pm: Q and A session and sharing of the full NQT programme. Close

The conference is FREE to all North West Learning Partnership members.

Secondary NQT Maths - Early Career Development Programme

Support to teachers in their early career is very often focussed on generic teaching strategies to assist with lesson delivery and managing workload in a setting with a mixture of subject areas. Schools are increasingly pushed for time and departmental time is not always available for pedagogy support to those that need it the most. This programme would focus specifically on breaking down a scheme of work and looking at the fine progression through the topic areas – how to effectively plan a unit of work to include ample assessment opportunities, including planning for questioning. Participants will take the topic and look at the progress from EYFS to KS3 and how to plan a unit of work effectively. The models shared will include CPA, problem solving, mathematical reasoning and a variety of assessment techniques. Gap task – participants will be required to complete a gap task activity in their own classroom focussed on an aspect of the planning covered in the workshop.

Topics covered will be – Calculation, Fractions & Decimals, Percentages, Manipulation of basic algebra, Ratio and Area.

Full details are here: <https://bit.ly/3m1U9tq>

"The best teachers are those who show you where to look, but don't tell you what to see."

Alexandra k. Trenfor

Developing Professional Learning Communities

Primary English Subject Leader meetings

Thursday 15th October 2020 9.30am-3.30pm
Mercure St Helens Hotel, Linkway West, WA10 1NG

- implications for teaching to prepare for 2020-21
- EEF Reports for Improving Literacy

Guest speaker: **John Murray – Reading Expert & Education Author** - focus on vocabulary

Facilitator: Maddy Barnes - English Director
Free to all members - all schools welcome

Primary Maths Subject Leader meetings

Friday 2nd October 2020 9am-3.30pm
Mercure St Helens Hotel, Linkway West, WA10 1NG

- Implications for the most important teaching year in decades
- A spotlight on Shape

Facilitator: Tara Loughran - Maths Consultant
Free to all members - all schools welcome

Primary Science Subject Leader meetings

Tuesday 13th October 2020 9.00-3.00pm
World of Glass, Chalon Way E, Saint Helens WA10 1BX

- Keep up to date with new initiatives in science education
- Share ideas and good practice with other science subject leaders
- Reflect on what is already going on in your school and find ways of moving your school forward

Facilitators: Lisa Henthorn and Julie Burger - Science SLEs
Free to all members - all schools welcome

Computing Subject Leaders

Tuesday 8th December 2020 1.30pm-3.30pm
Rainford High School Higher Ln, Rainford, WA11 8NY

- Agenda - as requested from previous sessions
- Free apps to use across the curriculum
 - Progression skills documents

Facilitators: Emma Greenough - Primary Computing SLE and David Williams - Secondary ICT Lead
Free to all members - all schools welcome

School Business Managers and Administrators Network

Thursday 26th November 2020 1.30am-3.30pm
Online via Zoom

- The impact of COVID 19 and the role of the SBM
- The current educational landscape and new ways of working in school - sharing of best practice, ideas and thoughts
- Agreement of focus areas moving forward

Target Audience: School Business Managers, Administrators, Clerical staff

Facilitator: Debbie Bennett - Business SLE
Free to all members - all schools welcome

EYFS Leadership Network

Monday 23rd November 2020 1pm to 4pm
Queens Park CE/URC Primary School, Rivington Road, St Helens, WA10 4NQ

- Share updates on current national priorities
- Explore teaching and learning strategies to improve pupil outcomes
- Provide networking opportunities to share good practice and discuss implications for your school

Facilitators: Hayley Wynne and Ruth Levy(EY2P)
£70.00 for non-partnership members
£35.00 for partnership members

All schools welcome

Secondary Maths Heads of Department Meetings

Thursday 15th October 2020 3.30-4.45pm
Online via Zoom

This is an opportunity for all Heads of Department to come together to review and share approaches to current national and local initiatives.

PRU/Special Schools - Wednesday 7th October 2020
Oakfield High School, Long Ln, Hindley Green, Wigan WN2 4XA

Further details: <https://bit.ly/33leMlz>

Free of charge

Full details of all our learning networks are here: www.northwestlearningpartnership.co.uk/index.php

To book places on any event contact:
paula.foster@three-saints.org.uk | 07383 089909

North West Learning Partnership Courses Autumn 1 (2020-21)

Maths

Implications for maths teaching in the most important year for decades - Headteacher briefing

Tuesday 15th September 2020 8.30am-11am

Teaching Times Tables KS2 - Preparing to Test

Tuesday 22nd September 2020 **Online**

Lesson Design in a Mastery Context - year group sessions

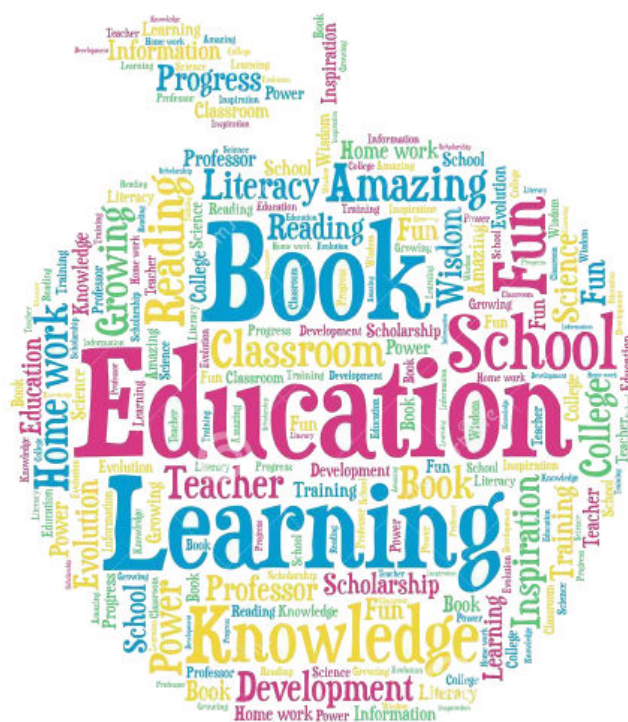
Starting Wednesday 4th November 2020 (Yr 6) **Online**

Moderation and Standardisation in Key Year Groups

Starting Tuesday 24th November 2020 9am-3.30pm (Yr 6)

For full details of all our maths CPD visit:

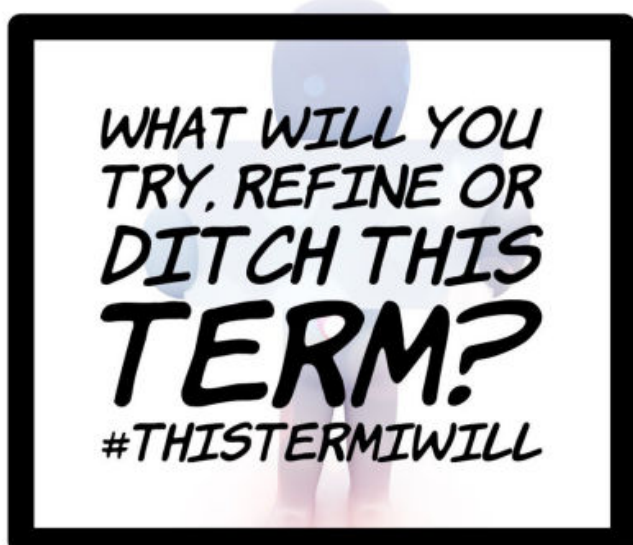
<https://bit.ly/3bzHA3y>



The full CPD programme for 2020-21

<https://bit.ly/2R0otq1>

To book places on any event contact:
paula.foster@three-saints.org.uk | 07383 089909



English

Implications for teaching English (Reading and Writing) post 2019-2020 - Headteacher briefing

Monday 21st September 2020 9am-11.30am

Teaching Assistants and Support Staff Training

Monday 12th October 2020 **Online**

EYFS - Preparing for Early Literacy

Friday 16th October 2020 **Online**

What is GDS in reading and writing? (KS specific training)

Starting Monday 19th October 2020 (KS1) **Online**

Moderation of writing: Years 2 Day 1

Monday 30th November 2020, 9.30am-3.30pm

Find out more here: <http://bit.ly/2HdBYhg>

Diversity is having a seat at the table, inclusion is having a voice, and belonging is having that voice heard.

Primary Excellent English Teacher Programme

Back by popular demand

These sessions are aimed at excellent English teachers/ subject leaders/SLEs/PDLs who have the potential and drive to achieve excellence in English practice and the ability to develop others.

7 full day sessions to include:

- What does outstanding English practice look like?
- Early steps in reading: Developing strategies to support early reading and phonic skills
- I can 'really read': Exploring the skills involved in teaching comprehension at KS1 (comprehension, analysis)
- I can comprehend: Using/choosing high-quality texts to engage readers and writing question mats at KS1 and KS2
- Writing: from early mark-making to end of KS1 expectation
- Writing: understanding purpose and audience in KS2; progression of writing and how to assess writing with a consistent approach

Delegates will be involved in 4 Gap tasks linked to practice in their own schools.

Day 1 Wednesday 23rd September 2020

Day 2 Wednesday 2nd December 2020

All sessions will take place from 9.30am-3.30pm at Wrightington Country Club, Moss Lane, Wrightington, Wigan, WN6 9PB

The cost of this training will be: £100 per session therefore £700 for the entire programme. This will include all course materials, delivery, refreshments and lunch at all events.

NWLP heavily subsidise this programme to ensure costs are kept at a minimum.

Find out more here: <https://bit.ly/3dh3KYo>

Primary Excellent Maths Teacher Programme

Back by popular demand

These sessions are aimed at excellent maths teachers/ subject leaders/SLEs/PDLs who have the potential and drive to achieve excellence in maths practice and the ability to develop others.

7 face to face sessions, 4 gaps tasks, ALL materials, professional advice and network to further collaborate.

The training programme provides a great opportunity to develop professionally and personally. It will support leadership development and growth in addition to having a 'Maths expert' in your school to disseminate key messages and train staff.

7 full day sessions to include:

- What does outstanding maths practice look like?
- Developing problem solving, reasoning and fluency throughout the primary phase.
- SKE and pedagogical understanding of place value, number, calculation, algebra and fractions.
- Effective monitoring to determine impact.
- Tracking of progress and skills to inform action planning and next steps.
- Exploring and developing assessment.
- Providing effective feedback
- Lesson structures, planning and questioning.

Day 1 Thursday 17th September 2020

Day 2 Monday 16th November 2020

9am-3.30pm at The Barn at Yew tree farm, Yew Tree Farm, Lower Road, Liverpool, L26 3UA

The cost of this training will be: £100 per session therefore £700 for the entire programme. This will include all course materials, delivery, refreshments and lunch at all events.

NWLP heavily subsidise this programme to ensure costs are kept at a minimum.

The cost of this training will be: £100 per session therefore £700 for the entire programme. This will include all course materials, delivery, refreshments and lunch at all events.

Find out more here: <https://bit.ly/3jVhQSi>

Whole School Curriculum Development Opportunities

Art: Unpicking the Art Curriculum

Monday 5th October 2020 9am - 3pm

OR

Tuesday 6th October 2020 9am - 3pm

Queens Park Primary school, Rivington Road, St Helens
WA10 4NQ

Focus:

- What does progression through Art look like in the National Curriculum with a focus on skills and knowledge.
- How to plan a unit of work.
- Leading Art effectively- the 3 I's and what this means.
- Practical elements to include: developing sketchbooks, drawing & printmaking.

Facilitator: Kerry Howarth - Art Specialist

History: Enquiry and Using Historical Sources

Tuesday 8th December 2020 9am-3.30pm

Mercure St Helens Hotel, Linkway West, St Helens, WA10 1NG

Focus

- The enquiry approach - what it is and why we should teach using it!
- Chronology - the fundamental building block!
- Historical Sources - more than just pottery and pictures

Facilitator: Stuart Tiffany - Historical association

Geography: Development of Mapping Skills Across the Curriculum

Thursday 19th November 2020 9am-3.30pm

The Barn at Yew Tree Farm, Yew Tree Farm, Lower Road,
Liverpool, L26 3UA

The session will explore a range of creative practical tasks designed to engage and develop pupils' mapping skills both inside and outside the classroom. Skills progression, alongside lesson sequencing, across the primary phase will be modelled and discussed to allow subject leaders to consider how mapping is taught in their unique setting. The session will prompt teachers to think critically about change and what is possible, probable and preferable at a variety of scales.

Facilitator: Jon Cannell - Geographical Association

Science CPD Sessions

Investigating Science

Day 1: Thursday 3rd December 2020 9am-3.30pm

Hawkley Hall High School, Carr Lane, Wigan, WN3 5NY

Focus:

- Increasing the amount and quality of investigative science
- Identifying barriers to effective primary science teaching and working to overcome them

Facilitator: Kate Redhead, Primary Science Teaching Trust
Regional trainer

Computing

Purple Mash training for Computing Subject Leaders

Friday 6th November 2020 9-3.30pm

Hawkley Hall High School, Carr Lane, Wigan, WN3 5NY

This session will explore the many tools and resources to support Computing SLs. The day will include opportunities to examine the Purple Mash Scheme of Work for Computing, resource to support leadership of Computing, preparation for an Ofsted Deep Dive and assessment, evidence and record-keeping.

Facilitator: Debs Ayerst - Computing Consultant / Purple Mash

I WASN'T BORN TO
"JUST TEACH."
I WAS BORN TO INSPIRE OTHERS,
TO CHANGE PEOPLE,
AND TO NEVER GIVE UP;
EVEN WHEN FACED WITH
CHALLENGES THAT
SEEM IMPOSSIBLE.

WE ARE
TEACHERS

Leadership Opportunities

NLEs (National Leaders in Education)

We currently have 3 NLEs working with the North West Learning Partnership.

LLE (Local Leaders in Education)

We now have 4 active primary and secondary LLEs working with the North West Learning Partnership.

Accredited Leadership Programmes:

The North West Learning Partnership is an affiliate hub partner with Best Practice Network (OLP). We have delivered NPQSL (National Professional Qualification for Senior Leadership) and NPQML (National Professional Qualification for Middle Leadership) for 6 years.

Groups running in 2020-21 include:

NPQML (National Professional Qualification for Middle Leadership)

Cohort 1: 2020 spring term start - Online via Zoom

Day 1 - 30th April 2020
Day 2 - 17th September 2020
Day 3 - 26th November 2020

Cohort 2: autumn 2020-21 intake APPLICATIONS NOW BEING TAKEN

Day 1 - Wednesday 16th December 2020
Day 2 - Thursday 11th March 2021
Day 3 - Thursday 17th June 2021

Facilitators: Jane Sweeney and Kathy Hall

DW Stadium, 15 Loire Dr, Robin Park Rd, Wigan WN5 0UH

NPQSL (National Professional Qualification for Senior Leadership)

Cohort 1: 2020 spring term start - Online via Zoom

Day 1 - Friday 1st May 2020 (postponed to be re arranged)
Day 2 - Friday 18th September 2020
Day 3 - Friday 27th November 2020

Cohort 2: autumn 2020-21 intake APPLICATIONS NOW BEING TAKEN

Day 1 - December 2020
Day 2 - March 2021
Day 3 - June 2021

Facilitators: Jan Holmes and Simon Hanley

DW Stadium, 15 Loire Dr, Robin Park Rd, Wigan WN5 0UH

Candidates can apply at the following links for future rounds:

NPQML: <http://outstandingleaders.org/qualifications/npqml>
NPQSL: <http://outstandingleaders.org/qualifications/npqsl>

When applying please state on the application form that you wish to attend face-to-face sessions with the North West Learning Partnership - see instructions below:

Applicants completing their programme application are asked to identify whether they have been recommended by one of BPN's delivery partners. If they have, then they will be asked to identify the partner from a drop-down list, and then to enter that partner's 'partner allocation code'.

The partner allocation code is: NWLP

This programme costs £950 which is paid directly to Best Practice Network. Best Practice Network (BPN) and the Outstanding Leaders Partnership (OLP) will be able to offer scholarships to candidates from 12 opportunity areas and the category 5 and 6 local authority districts. To see if candidates from your schools will be eligible for scholarships, please visit their website. For further information contact BPN on 0117 9209 424 or email cpd@bestpracticenet.co.uk

NPQH - For further information visit:
cpd@bestpracticenet.co.uk

Pupil Premium Reviewers:

16 Head teachers from the North West Learning Partnership are trained to carry out Pupil Premium reviews.

To commission this supportive review please contact Lisa Bradshaw.

School to School Support

We have supported a large number of primary and secondary schools in St Helens, Halton, Bolton, Knowsley, Wigan, Liverpool, Cheshire, Sefton and Warrington delivering in-house CPD sessions. These have included twilights and staff insets linked to Maths, English (reading, writing, SPAG), MFL, RE, computing, safeguarding, assessment, transition EYFS and science. We have a team of SLEs and other specialist practitioners that support our work.

Intensive support packages have also included moderation and standardisation of pupils work/planning and quality of provision. We have completed audits; support for teaching and learning including the use of questioning skills, effective deployment of adults and resources and use of ongoing assessments- tracking and target setting. We have a team of senior leaders including LLEs and NLEs that complete teaching and learning evaluations and pupil premium reviews.

All offers are bespoke. Please contact Lisa Bradshaw if you would like to create a bespoke offer to meet the needs of your school.

Leadership Briefings Autumn 2020-21

Implications for maths teaching in the most important year for decades

Tuesday 15th September 2020 8.30am-11am

Mercure St Helens Hotel, Linkway West, St Helens, WA10 1NG FREE to all partnership schools

Tara will look at how to support all children in school after the missing months. How can we prepare to support children to make accelerated progress? She will offer alternative medium-term plans to support all year groups.

Facilitator: Tara Loughran - Maths Consultant

Implications for teaching English (Reading and Writing) post 2019-2020

Monday 21st September 2020 9am-11.30am

Mercure St Helens Hotel, Linkway West, St Helens, WA10 1NG FREE to all partnership schools

With a focus on the missed months, how can schools address appropriate coverage whilst ensuring that they keep up and are inline with national expectations?

Facilitator: Maddy Barnes - English Director

EYFS Baseline Session - NEW

Tuesday 6th October 2020 9am-12 noon

The Barn, Yew Tree Farm, Lower Road, Liverpool, L26 3UA

Areas for discussion include:

- The national rollout of the Reception Baseline Assessment: facts v myths;
- What constitutes good EYFS assessment;
- Policy priorities for the reforms to EYFS Profile Assessment.

What has lockdown meant for all these proposed changes? Where are we now?

Facilitator: Nikki Walters - Head of Regional Development at Early Excellence

Dyslexia Awareness and Intervention Package - NEW

Friday 16th October 2020 9.30am-11.30am

Mercure St Helens Hotel, Linkway West, St Helens, WA10 1NG

An insight to why pupils present dyslexic tenancies, how these learning barriers impact teaching and learning and how quality first teaching strategies in the classroom can support pupils in overcoming these learning barriers.

Facilitator: Kathy Carman - Dyslexia Accredited Consultant

"If your actions
inspire others to
dream more,
learn more,
do more and
become more,
you are a
leader."

John Quincy Adams



Want to keep up with opportunities and events from North West Learning Partnership?
Sign up for our mailing list.

<http://eepurl.com/du2ifH>

SLEs - Specialist Leaders in Education

We now have 35 active SLEs (Primary, Secondary and Special phases) and 5 PDLs (Professional Development Leads - Maths).

We are an accredited teaching school provider able to deliver the **SLE Mandatory Training**.

The areas covered by our SLEs are: Maths (primary and secondary), English (primary and secondary), Computing (including digital literacy and media), Science (primary and secondary), Early years, NQTs/ITT, Leadership of the curriculum, attendance, SEND, Behaviour and safety, attendance and welfare, School Business Management, closing the gap (diminishing differences), catering for the higher attainers (previously G&T), MFL, RE and Physical Education.

Bespoke offers can be created for single or cluster school events. Please contact Lisa Bradshaw for further details.

SLE development opportunities- we are committed to the ongoing development of SLEs that work on behalf of our alliance. The SLEs have 'team away days' led by national and international experts in their field. This supports them to engage in up to date current thinking and supports them in developing and deploying these strategies when supporting schools and delivering professional development.

Pen portraits of SLEs can be seen here: <https://bit.ly/3IW3uTo>

Headteacher Conference

Wednesday 4th November 2020

8.30am-3.30pm

Haydock Race Course, Newton-le-Willows, WA12 0HQ

£100 per delegate

Guest speakers include:

Mark Bocker (Pivotal Education)- Managing adult behaviour and developing emotional control to influence the behaviour of learners

Dr Ioan Rees - Leadership evidence based- building high performance. Getting it right for pupils and staff

Debra Kidd - Building, creating and developing a rich, purposeful curriculum

Pauline Brown and Lizzie Francis (Education Endowment Fund - EEF) - What the EEF has to offer and using evidence based research to effectively inform school practice.

Tickets are limited to 120 and places will be allocated on a first come, first served basis

Further details will be circulated nearer the time



For more information on any of the projects referred to in this newsletter contact:

Lisa Bradshaw - Director of North West Learning Partnership: lisa.bradshaw@three-saints.org.uk | 07446 463250

Sarah Makin - Senior North West Learning Partnership Administrator: sarah.makin@three-saints.org.uk | 07446 446418

Paula Foster - North West Learning Partnership Administrator: paula.foster@three-saints.org.uk | 07383 089909

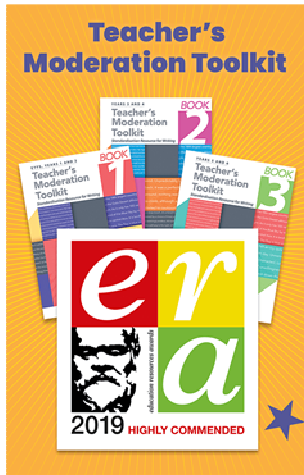
Sarah Knowles - North West Learning Partnership Clerical Support sarah.knowles@three-saints.org.uk

Visit the North West Learning Partnership website: www.northwestlearningpartnership.co.uk

for full programme details.

Follow us on twitter- [@NWLP](https://twitter.com/NWLP)

Writing Moderation Tool Kit



Back by popular demand

The Writing tool kit is currently being used by schools to support moderation and standardisation. It supports teachers in all year groups to cross moderate (against national standards) with teacher guidance notes and supports pupils to identify features of a good piece of writing at all stages.

The resource has been quality assured by a team of English Advisors, English SLEs and Prim-Ed team publishing company to ensure it is of a high standard.

This is available for all schools to purchase via Prim-Ed:

<http://www.prim-ed.com/webshop/English/Writing/TeachersModeration-Toolkit>

There are two versions of the exemplification materials: those that are annotated with references to the national curriculum, and those that are not annotated, for CPD use or to share with children. Once purchased, the Teacher's Moderation Toolkit is available as an e-book which maximises the opportunities it can be used for.

The Teacher Moderation Toolkit (written in conjunction with many St Helens' TSA schools) won the 'Highly commended' award in the 'Best Primary Resource' category at the ERA (Education Resource Award) in 2018-19.



As requested by Head teachers and English SLs across the NW region we are holding 'Writing Moderation Toolkit Road Shows' in different areas throughout 20-21.

All delegates will receive a FREE book. Training will include staff development on how to use the resource whilst moderating their own books, subject knowledge and pedagogical understating of what is involved when assessing/moderating a piece of writing at the different levels, how to standardise against national criteria.

ALL teachers from across the NW region are welcome to attend regardless of venue. We have selected venues based on demand from previous years.

LKS2 teachers (Year 3 and 4):

Tuesday 26th January 2021 9.30am-3.30pm

Wigan area (including surrounding areas)

Hawley Hall High School, Carr Lane, Wigan, WN3 5NY

KS1 teachers (Year 1 and 2)

Monday 1st February 2021 9.30am-3.30pm

Warrington area (including surrounding areas)

The Village Hotel, 110 Centre Park Square, Warrington WA1 1QA

LKS2 teachers (Year 3 and 4)

Tuesday 9th February 2021 9.30am-3.30pm

Sefton area (including surrounding areas)

Formby Hall Golf Reswot and Spa, Southport Old Rd, Formby, L37 0AB

UKS2 teachers (Year 5 and 6)

Thursday 11th February 2021 9.30am-3.30pm

Cheshire/Wirral (including surrounding areas)

The Village Hotel, Bromborough, Pool Lane, Birkenhead, Wirral, CH62 4UE



National Tutoring Programme: Information for Schools

The National Tutoring Programme (NTP) will provide additional support to schools to help disadvantaged pupils whose education has been most affected by school closures. Find out more here: <https://nationaltutoring.org.uk/>

The NTP is being developed to support schools to respond to the immediate challenge of school closures due to Covid-19 and to provide a longer-term contribution to closing the attainment gap.

The NTP website has been created to support schools to access the **Tuition Partners** and **Academic Mentors** pillars of the NTP. Both pillars are funded as part of the Government's £1 billion coronavirus catch-up package, with £350 million allocated to support tutoring. Further information about catch-up funding, including for early years settings and post-16 providers, is provided on the Department for Education website.

The programme has been designed and developed by a collaboration of five charities – the Education Endowment Foundation, Sutton Trust, Impetus, Nesta and Teach First – working in partnership with the Department for Education. Additional support has been generously provided by KPMG Foundation, Bain & Company, and Freshfields.



National Tutoring Programme - Tuition Partners:

[Click here to access a copy of the NTP Tuition Partners application form and guidance notes.](#)

To apply, click here: <https://www.tfaforms.com/4848221>

National Tutoring Programme: Best Tutoring Practice - Briefing for schools: <https://bit.ly/2RuHBNO>

This guide aims to help state schools in England make the most of tutoring opportunities available through NTP Tuition Partners, the delivery of which will be led by the EEF.

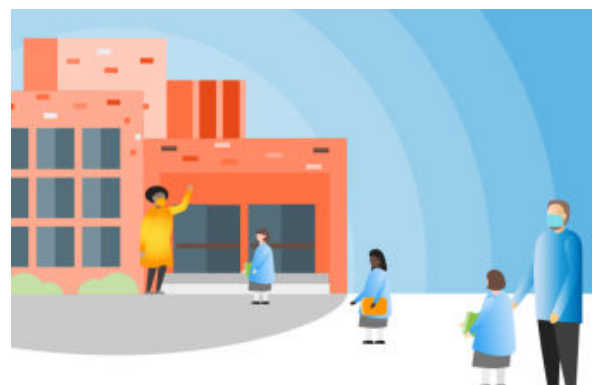
A list of approved Tuition Partners (by region) will be available from Nov 2020.

The EEF's 'Guide to Supporting School Planning 2020/2021'

[The EEF guide to supporting school planning: A tiered approach to 2020-21](#) aims to support school leaders for this academic year 2020-21. It proposes a tiered model that focuses upon high quality teaching, targeted academic support (including tutoring approaches) and wider strategies to aid school leaders' existing school improvement planning efforts.

The EEF recognise that school leaders and teachers will face significant demands on their time as they manage a full-time return to school for all pupils. The needs of pupils and staff are heightened by the logistical challenges of providing safe school sites and more. This guide has been developed alongside [a range of EEF Covid-19 related resources](#). These include support resources for schools and resources to share with parents.

The EEF strongly recommend that school leaders consider how these additional resources can supplement their existing planning efforts.



Chartered College of Teaching: Curriculum guidance for the current climate

Chartered College of Teaching: Catch up and recovery processes selected reading is here: <https://bit.ly/3iSUWus>

A collection of articles, blogs and resources about how schools may approach catch-up and recovery. Cat Scutt from the CCT writes:

“There is understandably concern about the learning that many pupils will have missed whilst unable to attend schools face-to-face due to the COVID-19 outbreak – both due to learning time they may have missed, and due to a possible extended ‘summer learning loss’ effect where learning prior to the lockdown may have been forgotten. There is also, rightly, concern about the impact of pupils from a socio-emotional perspective.

A number of proposals have been made about how schools (and other organisations) may seek to support pupils during a recovery period as schools reopen more widely, and / or how pupils may be supported to “catch up” on lost learning. Criticism has also been raised around the notion of “catch-up”. This page (link above) includes links to a wide range of useful articles, blogs, research reports and resources from different sources (all freely available or available through Chartered College membership) that explore ideas relating to how we can support pupils as school sites are reopened to more pupils this September.”



EEF: New guidance for SEND in mainstream schools

Five recommendations on special education needs in mainstream schools: <https://bit.ly/341H6Qz>

Pupils with Special Educational Needs and Disability (SEND) have the greatest need for excellent teaching and are entitled to provision that supports achievement at, and enjoyment of, school. The attainment gap between pupils with SEND and their peers is twice as big as the gap between pupils eligible for free school meals and their peers. However, pupils with SEND are also more than twice as likely to be eligible for free school meals.

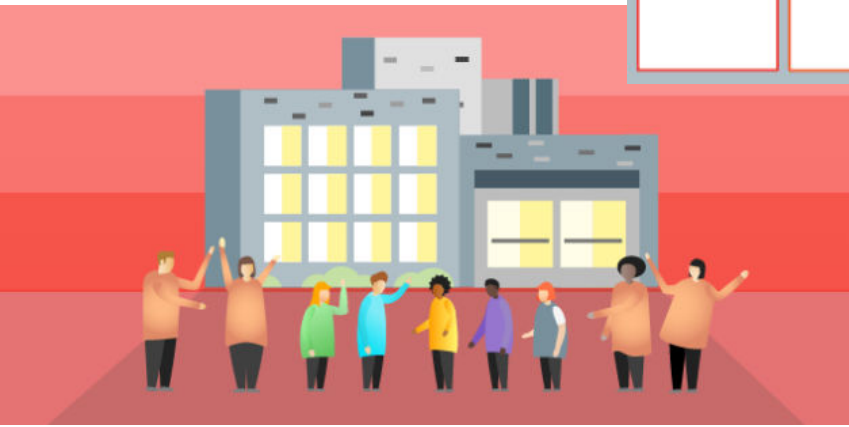
The EEF offers five evidence-based recommendations to support pupils with SEND, providing a starting point for schools to review their current approach and practical ideas they can implement.

Click here for the summary recommendations poster: <https://bit.ly/2FQeSzQ>

Education Endowment Foundation

SPECIAL EDUCATIONAL NEEDS IN MAINSTREAM SCHOOLS
Summary of recommendations

- 1** Create a positive and supportive environment for all pupils, without exception.
 - An inclusive school environment is essential to learning and participation, providing a safe and supportive environment for all pupils, and ensuring that all pupils and the staff are protected from abuse, harassment and bullying.
 - Consideration of the needs of all pupils, including those with SEND, is essential to creating a positive and supportive environment for all pupils.
 - A culture of respect and positive relationships is essential to creating a positive and supportive environment for all pupils.
- 2** Build an ongoing, holistic understanding of your pupils and their needs.
 - Schools should use an individualised approach to understanding the needs of all pupils, including those with SEND, and ensure that all pupils are supported to achieve their potential.
 - Schools should use a range of assessment methods to understand the needs of all pupils, including those with SEND, and ensure that all pupils are supported to achieve their potential.
 - Schools should use a range of assessment methods to understand the needs of all pupils, including those with SEND, and ensure that all pupils are supported to achieve their potential.
- 3** Ensure all pupils have access to high quality learning.
 - The goal is to ensure that all pupils have access to high quality learning, including those with SEND.
 - Schools should ensure that all pupils have access to high quality learning, including those with SEND.
 - Schools should ensure that all pupils have access to high quality learning, including those with SEND.
- 4** Consideration of high quality teaching with carefully selected small groups and one-to-one interventions.
 - High quality teaching should be the focus of all schools, and should be supported by carefully selected small groups and one-to-one interventions.
 - High quality teaching should be the focus of all schools, and should be supported by carefully selected small groups and one-to-one interventions.
 - High quality teaching should be the focus of all schools, and should be supported by carefully selected small groups and one-to-one interventions.
- 5** Work effectively with learning assistants.
 - The most effective use of learning assistants is when they are used to support high quality teaching, and to provide additional support to pupils with SEND.
 - The most effective use of learning assistants is when they are used to support high quality teaching, and to provide additional support to pupils with SEND.
 - The most effective use of learning assistants is when they are used to support high quality teaching, and to provide additional support to pupils with SEND.



COVID Statement

The school year 2020/21 will be substantially affected by the impact of the coronavirus outbreak. The knock-on effects on school life and teachers' working lives can't be predicted with any certainty. So, all Maths Hubs work and NWLP work will be flexible and adapt to changing realities. There's likely to be more live online collaboration where possible.

However, we would like to ensure you that where face to face sessions are being held safety of staff attending is our highest priority.

What you can expect from NWLP:

We are following current PHE and Government guidelines and as such the following will be in place at all organised events;

When using hotel and conferencing venues:

A member of the NWLP team will be at all events to ensure all attendees are adhering to advice given.

Larger than normal spaces have been allocated.

Restricted numbers applied.

Staff at the venues are receiving daily temperature checks and will be wearing full PPE.

Full track and trace details will be taken on entry.

Sanitisation stations will be in place. With increased cleaning of shared spaces i.e. toilets/entrances.

Social distancing will be encouraged- one-way systems and 1m rule (where possible this will be 2m)

Refreshments will still be provided this will be served and/or individually wrapped.

What we expect from delegates attending:

Face coverings are **STRONGLY** encouraged.

It is essential that people book in advance so that we can cater for and allocate recommended space to ensure the safety of all attending. Delegates that arrive without being booked on will be asked to wait to see if they can be accommodated safely. All bookings made to NWLP will receive a confirmation booking email being sent to you by Paula Foster once processed - paula.foster@three-saints.org.uk .

If you are displaying symptoms then please do not attend the event.

If you, or a member of staff from your school can not attend an event the usual cancellation procedure applies.

Please note all cancellations must be in writing via email to paula.foster@three-saints.org.uk. A confirmation of your cancellation will be sent to you once received. Should you be in a position to supply a substitute delegate there will be no charges.

NWLP reserves the right to cancel and/or alter provision for any courses that have not reached sufficient delegate numbers, ensuring financial viability. Schools that have booked any places will be notified by email of the cancellation with at least 5 days notice before the course is taking place. The cancellation email will be sent to the address of the original course booking.

The cancellation rates are as follows:

14-30 days before: charged at 25%

13-1 days before: charged at 50%

Less than 1 day: Charged at full training rate

Finally, we are looking forward to welcoming you back to face to face events- we know online just isn't the same. Nothing can replace networking and true collaboration that discussions (formal and informal) can bring. We ask that delegates help the team at NWLP to reduce the risk by 'staying alert' and being sensible to ensure you and your colleagues feel safe and secure when attending NWLP organised training events.

We will endeavour to keep up to date with all Government guidelines and do our utmost to adhere to the guidance provided.

Stay safe and well.

