



SACRE NEWSLETTER

(Issue 14) Summer 2023

Twitter: Lancashire SACRE @LancsSACRE

[Religious Education - LPDS Resources \(lancashire.gov.uk\)](https://www.lancashire.gov.uk)

Contents

Page 1

[Annual Religious Education Self Evaluation Survey 2023](#)

[FAQ's.](#)

Page 2

[RE Consultant Vacancy](#)

[National Conversations](#)

Page 3

[Planning your RE Lessons for Summer Term?](#)

[FREE Summer RE Training](#)

Page 4

[RE Regional Hubs](#)

[School Visitors](#)

[Spirited Arts Competition](#)

Page 5

[Vocabulary Lists](#)

[BBC Treasure Champs](#)

[New Online shop for RE Resources](#)

Page 6

[Fischy Music](#)

[Discovering Sacred Texts](#)

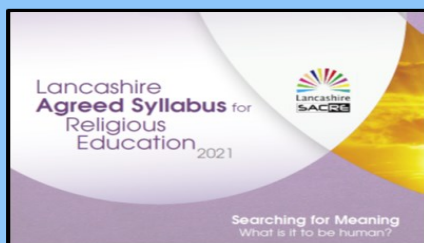
[Needing Help?](#)

Page 7

[Secondary Schools—Thank you](#)

[VLOGS from local faith representatives.](#)

[New LPDS website Information](#)



Annual Religious Education Self Evaluation Survey 2023

The annual self-evaluation survey is now live and the deadline for submission is 29 September 2023.

Instructions, which include a link to an electronic click form, will be uploaded to the School's Portal on 20th April 2023.

The SACRE are greatly appreciative of the increasing number of schools who complete the survey each year. Findings are reported to the DFE, NATRE and schools via the annual report each autumn term.

If you are finding it difficult to access the survey via the portal please use this link

<https://clickquestion.lancashire.gov.uk/runQuestionnaire.asp?qid=903771>

FAQ's

The Lancashire SACRE team has created a FAQ area on the new RE website with the intention of enabling schools to find answers to some of the more commonly asked questions.

[FAQ's - The Lancashire Agreed Syllabus for Religious Education - LPDS Resources](#)

You need to have a LPDS account, to be able to see this, see [page 7](#) on how to create one if you have not done so already.

Do you feel that you can contribute to the development of RE across Lancashire?

Are you looking to develop new skills, learn from others and gain experience in other contexts?

Then why not consider applying to join our pool of associate RE consultants!

An exciting opportunity has arisen for experienced Lancashire primary teachers. Due to the increasing demand for support in delivering the Lancashire Agreed Syllabus for RE, agreement has been given to add to the pool of existing RE associate consultants.

Consultants will be trained to:

- Provide 1: 1 support for teachers and subject leaders
- Deliver school based INSET both within and outside Lancashire.
- Organise Pupil Voice events
- Deliver marketed courses.
- Lead local network meetings
- Work as a team to develop new materials.

We would ask that Headteachers release the successfully appointed teachers to the pool initially for up to 5 days/ term as and when required by prior agreement. This request would be in response to demand and would be subject to the experience and skills required to support the request.

Schools would be reimbursed for the release of their member of staff at a rate of £450 per day which would also include an element for travel expenditure that may be incurred by the teacher. Supply cover at £165.00 per day will be provided for attendance at REC meetings, training sessions and when working as a team to write new materials.

If you feel that you or a colleague would be suitable for this opportunity approval is required from your headteacher. Please contact advisory.support@lancashire.gov.uk for an expression of interest form. Closing date 12 noon 12th May 2023. A recruitment process, including an observation of the applicant, will take place during the summer term 2023. Informal discussions about the role are welcomed. Please email alison.lloyd@lancashire.gov.uk to arrange a conversation.

National Conversations

A member of the NATRE executive, Shammi Rahman, recently interviewed The Children's Commissioner, Dame Rachel de Souza. Dame Rachel is a previous RE teacher and headteacher and Shammi, is an ex secondary teacher and now a Race Equality Adviser.

To listen to their conversation click here:

<https://www.childrenscommissioner.gov.uk/resource/conversation-with-shammi-rahman-the-importance-of-religious-education/>

FREE SUMMER TERM TRAINING

Are you Planning a Unit of Work within Primary Religious Education?

The aims of this new summer term course are:

- To understand how to use Lancashire SACRE exemplifications as a starting point when planning a unit of work.
- To understand how to plan a unit of work as guided by the Lancashire Field of Enquiry.
- To gain skills in planning lessons sequentially so that knowledge builds up to a clear unit end goal.

A Hindu Dharma unit will be shared as a model of effective medium term planning. The rest of the course will take the form of a workshop where teachers plan another unit of work under the guidance of consultants.

Queries relating to the completion of the annual survey will also be answered.

To sign up please click the link here: [Details - LPDS Resources \(lancashire.gov.uk\)](#)

You need to have a LPDS account to be able to book on to this, see [page 7](#) for guidance on how to create an account if you have not done so already.

Planning your RE Lessons for Summer Term?

Have you considered using Godly Play?

The Godly Play Bus Team offer the opportunity to experience a Bible story, followed by a time to respond using craft materials and a feast!

For more information, please contact Kim Gabbatiss, Godly Play Bus Project Co-ordinator, on 07769 293763, or email: kim.gabbatiss@methodist.org.uk

For more information about Godly Play, see www.godlyplay.uk



Regional RE Hubs

Join the Facebook page **RE HUBS England and Wales** to tap into a network of teachers who are sharing resources, training and ideas.



School visitors: Voices of Faith and Belief in Schools

The [Voices of Faith and Belief in Schools](#) document provides guidance and a code of conduct in relation to school visitors. It was produced by the National Association of Teachers of RE (NATRE), a member organisation of the RE Council.



Spirited Arts 2023 Competition



Get involved in the 2023 competition!

Join hundreds of schools from around the world taking part in this year's NATRE Spirited Arts competition! Entries are welcomed in (almost!) any art form your pupils can think of, including:

- Art (painting, drawing, sketching etc)
- Poetry
- Photography
- Dance
- Music
- Drama
- Sculpture

Winning entries will provide a good response to one of the 5 themes, and judges will be asking 'Is it original?' 'Is it well-crafted?' And (most importantly!) 'Is it excellent RE?' Pupils can enter individually, in pairs or groups, or as whole class, year or school entries.

The annual competition starts at the beginning of every school year and runs through the spring and summer terms. All entries must be received before **Monday 31 July 2023**.

Many schools host their own Spirited Arts competition and submit their 10 winning entries. What a great way to engage all your teachers and pupils and raise the profile of RE in your school!

To enter click here: [Submit your entry to Spirited Arts 2023 | NATRE](#)

NEW ONLINE SHOP FOR RE RESOURCES

RE Today produces RE resources to support teachers in the classroom. Whether you are looking for eResources linked to their most recent termly mailings, the back catalogue of REtoday resources, resources linked to their publications and projects, or just FREE resources you can find them via this link

[Resources \(retoday.org.uk\)](http://Resources(retoday.org.uk))



SPECIAL OFFER FOR SACREs!

Get 20% off* when you shop for books! If you've had your eye on a book, now's the time to buy it! Use the code **sacre20** at the checkout.
*Cannot be used in conjunction with any other offer.

reteachingresources.co.uk

RE Teaching resources

The advertisement features a light orange background with a green border. On the right, there is an illustration of two people: one standing and looking through binoculars, and another sitting on the ground. On the left, there are icons for a book, a document, a laptop, and a gear, along with the text 'RE Teaching resources'.

RE Today

5–6 Imperial Court,
12 Sovereign Road,
Birmingham,
B30 3FH

Direct line: 0121 415 3970

BBC TREASURE CHAMPS – SUITABLE FOR KEY STAGE ONE

This collection of 30 films explore universal values and are drawn from a variety of faiths, cultures and world views. Each of the stories is approximately 4 minutes long.

Click here: [Treasure Champs - BBC Teach](#)

On each page you will find a series of questions to share with pupils to help them recall the main events of the story, as well as notes for the teacher offering suggestions for follow-up activities. A framework for collective worship is also provided.

VOCABULARY LISTS

Our consultants have recently uploaded three vocabulary lists to the RE website:

[Vocabulary - LPDS Resources \(lancashire.gov.uk\)](http://Vocabulary-LPDSResources(lancashire.gov.uk))

They are aligned to knowledge within Christianity, Hindu Dharma and Islam and follow the Lancashire Agreed Syllabus.

Thank you Natalie and Helen!

(You need to have a LPDS account, to be able to see this, see [page 7](#) on how to create one if you have not done so already)

Fischy Music



Fischy Music is a Scottish charity founded by Stephen Fischbacher. They create songs to nurture positive mental health in children by helping them express & manage a range of emotions

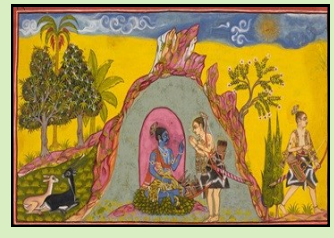
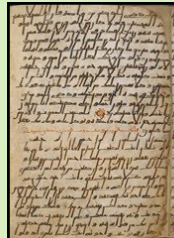
Fischy Music have produced eight new songs and lesson ideas to support primary RE. Lat Blaylock explains this new project via a webinar.

To watch please click here:

<https://www.fischy.com/news/free-webinar-new-re-songs-and-resources/>

DISCOVERING SACRED TEXTS

The British Library have a collection of sacred texts that are now downloadable for the six main world religions. They are suitable for years 5 and 6 and include lesson plans.



Please

follow this link: [Dis-](#)

[covering Sacred Texts: Key Stage 2 teaching resources | The British Library \(bl.uk\)](#)

This virtual tour of a Mosque is suitable for KS2 and KS3 and is really clear to follow. Vocabulary is emphasised.

To access please click here: [Holy Cribs: The Mosque - TrueTube](#)

'Azeen welcomes TrueTube to the East London Mosque and we're given the full tour. Azeen talks about the features of a traditional mosque and shows us how Muslims pray.'

Needing Help?

Finding the Agreed Syllabus a challenge? Not sure how to assess in RE? Needing to increase subject knowledge of a specific religion? Wanting to raise the profile of RE in your school? Committed to developing the effectiveness of the subject leader for Religious Education?

To access support please contact: advisory.support@lancashire.gov.uk

Secondary Schools—Thank you

The SACRE would like to thank the secondary schools who completed our religious education self-evaluation survey. The information provided has enabled the SACRE to gain a fuller picture of RE across the county at KS3 and KS4.

VLOGS from local faith representatives

The Lancashire Forum of Faiths have produced a number of VLOGS where local people representing different religions talk about their lives and beliefs. They can be accessed via the RE website.

[VLOGs from local faith representatives - LPDS Resources \(lancashire.gov.uk\)](#)

You need to have a LPDS account to be able to see this, see below on how to create one if you have not done so already.

New LPDS (Teaching & Learning Website)

You should be aware by now that the Lancashire Grid for Learning (LancsNGFL) has moved & is combined with the Lancashire Professional Development Service website. This new **LPDS Teaching and Learning Website** can be accessed here: www.lancashire.gov.uk/lpds your RE website subscription is located here [Religious Education - LPDS Resources \(lancashire.gov.uk\)](#)

In order to have your own account set up on the new website the head needs to follow the guidance sent to them in July via the portal, included here



Adobe Acrobat
Document

Once this is done you should visit www.lancashire.gov.uk/lpds and select 'login', then select 'forgot password? Please use the email address that your head registered to your account. Please note that you can not do this if the head has not already set up an account for you, only the head can do this, see the letter below that was sent to the head with instructions.



Adobe Acrobat
Document

This means that you no longer need to use the generic password but can instead create your own.

If you need any **technical support** about logging on **after** your head has set you up with an account then please contact us at lpds@lancashire.gov.uk

For other queries please do not hesitate to contact us on 01257 516166 or advisory.support@lancashire.gov.uk